



## Reflection Lamps: Structural decomposition

**Asger Risborg Jakobsen sought to highlight the essential elements of a lamp: the light source and the lampshade. The Reflection lamps, a new addition introduced in the Bolia spring collection, separate these two basic elements, which are then highlighted. The results are lamps with a fine and light silhouette and playful inspiration.**

The Reflection lamp series was designed with the ambition to create elegant, simple and timeless pieces that would embrace and emphasise the essential characteristics of a lamp, namely light and shade. Their designer, Asger Risborg Jakobsen, thus separated two elements usually combined, the light source and the lampshade, to highlight them and create a play of shadows and reflections that would diffuse a soft light all around.

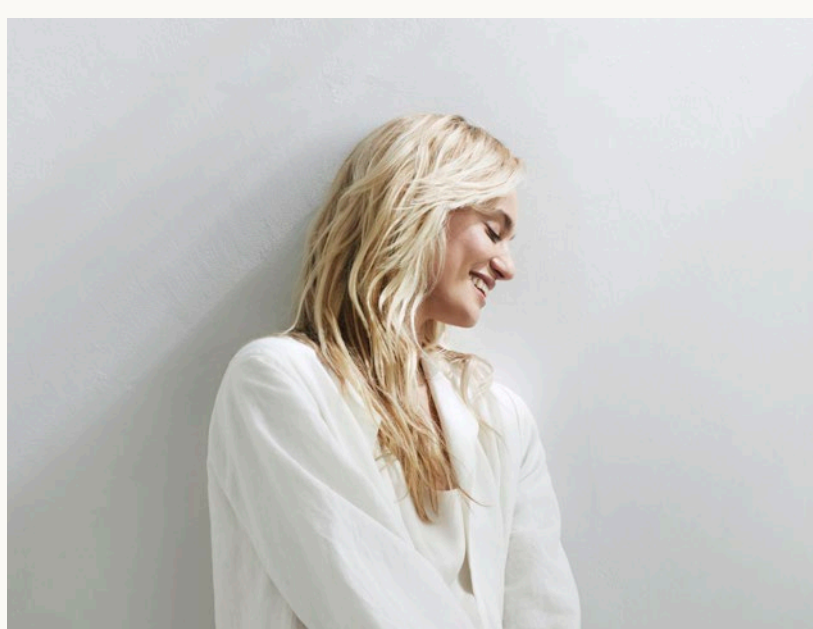
"The light source shines with a bright glow, while the soft curve of the lampshade gently reflects it where needed. To me, a lamp must provide enough light to satisfy the need for concentration, but at the same time remain soft and comfortable, while enhancing beauty", explains Asger Risborg Jakobsen. He likes to call the Reflection lamp an "unconventional classic".



### Scandinavian design

Sculptural, tending towards timeless, while still offering a new perspective, Reflection fully satisfies its purpose while avoiding glare, and adding a light look and strong structure. Research and prototyping made it possible to test the finest possible dimensions, ensuring the perfect silhouette.

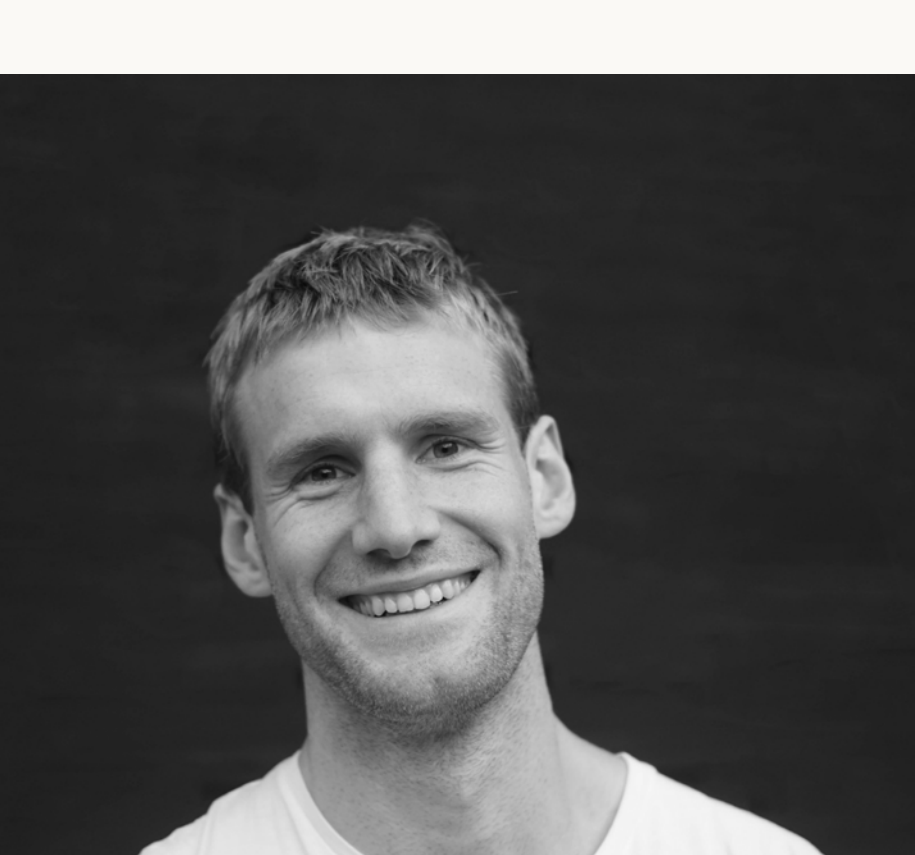
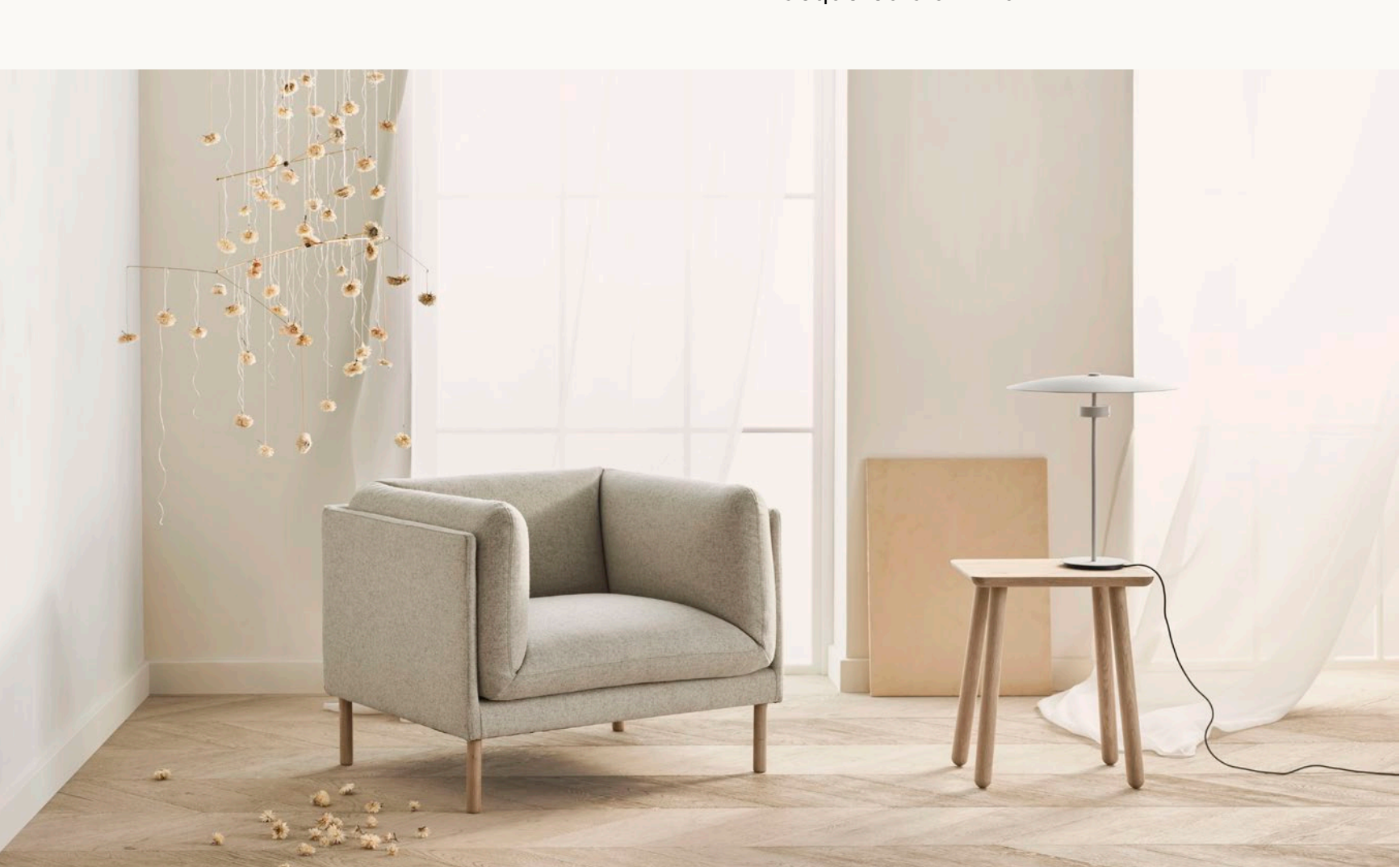
"Getting closer to timelessness is to understand the essence of an object and try to reach it through honesty and simplicity", adds the designer. Reflection is thereby the result of an interest in the design of an object with lasting, timeless qualities. The simple and timeless colours have been chosen to blend effortlessly into different interiors, ensuring that you will never get tired of it.



**Price:**  
from 375€

**Models:**  
pendant, floor lamp, table lamp  
and wall lamp

**Material:**  
black lacquered aluminium, grey  
lacquered aluminium or brass  
lacquered aluminium



### Asger Risborg Jakobsen

Born in 1989 in the Danish countryside, Asger Risborg Jakobsen takes his sensitivity to nature perhaps from his childhood close to nature, which translates into architectural projects that blend into their natural environment with respect and fascination. After studying architecture at the KDAK, Asger Risborg Jakobsen turned to medicine, before turning to the design of architectural projects and lighting fixtures that creatively overturn the codes of classical design.

### Bolia.com

Bolia.com is a design company with 66 stores in Denmark, Sweden, Norway, Germany, Belgium, the Netherlands, Switzerland, Austria and France and web shops in 32 European countries. Bolia also collaborates with 600+ dealers in 50+ countries worldwide and has a strategic partnership with US based Steelcase Ltd. for sales to the global professional market. The Bolia design collective consists of more than 30 international designers who all share a passion for New Scandinavian Design and sustainable creations.

### Contact

Head of PR  
Camilla Kallehauge Møller  
PR@bolia.com